

**CoreXchange – The premier provider of Internet bandwidth, colocation and disaster recovery services.**

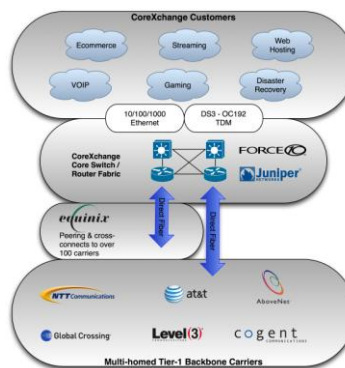
Founded in 2006 by top industry professionals from the networking, hosting and wireless industries, our [management team](#) and staff are experts in IT services, network technology, colocation, business continuity, and client support.

**Innovative, cost effective, industry-leading solutions bring simplicity to advanced networking requirements.**

Delivering the industry’s first [network access exchange](#), a comprehensive suite of Internet bandwidth options, colocation solutions, managed network and availability services to business enterprises and service providers.

**High availability and performance with [multiple Tier-1 backbone carriers](#) through one managed connection**

- Superior performance for high network demand applications
- Redundant and fault-tolerant infrastructure
- Latest generation core routing and switching equipment
- Expert configuration and traffic routing



**WHY COREXCHANGE**

100% Customer Retention

Experienced engineering and service-oriented leadership

Carrier-class colocation facility in the Dallas Infomart

Multi-homed, Tier-1 backbone carriers

State-of-the-art network equipment

Configurator<sup>SM</sup> tool for instant, online bandwidth pricing

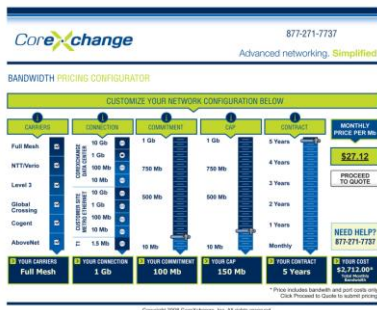
Metro Ethernet Internet connectivity

Business Continuity Center

Disaster Recovery

Premier managed-backup solutions

CoreControl<sup>SM</sup> portal for easy support & account management

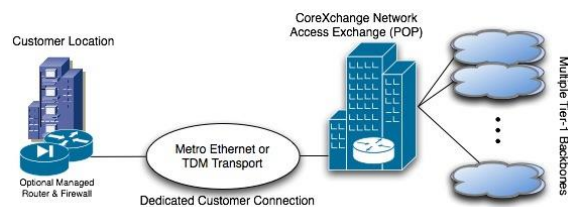


**Instant online pricing and configuration with [CoreXchange Configurator](#)**

- Industry’s first tool for immediate bandwidth pricing and custom configurations
- Multi-homed mesh of Tier-1 Internet backbones through one single, highly managed connection
- Complete control of performance and cost
- Reduces costs and eliminates lengthy negotiations with multiple carriers
- Custom configurations live and available today

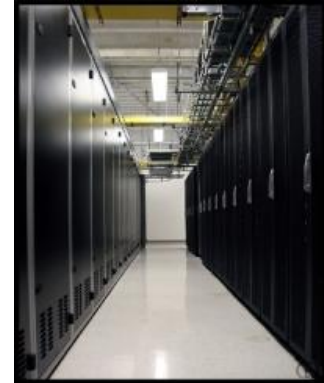
**[Metro Ethernet Connections](#) to your office LAN and facilities with accessible pricing and quick provisioning**

- Dedicated local loop to high-performance meshed network
- One-hop access to multiple Tier-1 backbones
- Metro Ethernet and TDM (DS3/OCn) connection options from 1 Mbps to 10 Gbps and above
- Business class bandwidth supports VoIP, VPN, and other mission-critical applications



**CoreXchange Data Center located in the globally recognized Dallas Infomart**

- Over 16 fiber providers with peering and cross connects to over 100 carriers, including direct connections to Equinix
- Unrivaled power redundancy that includes independent TXU substation feeders and six in-building main switchgear rooms
- 24/7/365 physical access and on-site NOC
- Free remote hands
- Free bandwidth reporting (MRTG)
- 100% power and network SLA available
- Redundant power via UPS, ATS and diesel generator backup
- Fire detection and suppression
- 10 Mbps to 10 Gig E fiber handoffs
- Expert Network / Security consulting and management



**CoreAvailability<sup>SM</sup>, Affordable Business Continuity and Disaster Recovery Solutions**



- Experienced engineers plan logistics and provide support for immediate recovery
- Unique combination of Class A office space directly adjacent to our high availability data center
- One-hop access to multiple Tier-1 network backbones
- Cubicles, conference rooms, copier, printers and kitchen
- Optional a la carte services including phone, desktop PCs, and office network
- On-site cafeteria and convenience store
- Dallas metro location with over 70,000 hotel rooms outside hurricane and flood zones

**Instant, offsite backup via CoreXchange's Network Access Exchange**

- CoreXchange provides backup and data recovery services in partnership with industry leader i365<sup>TM</sup> Inc., A Seagate Company<sup>®</sup>
- Backups work seamlessly within an existing infrastructure
- Fully automated and customizable, no manual intervention
- Encrypted data is available 24/7 via user-initiated recovery
- Recovery is rapid, accurate, and immediate
- No need for expensive tape media, hardware or software
- Backup agents install easily and data is sent over existing private networks or the Internet
- Organizations can easily comply with regulations governing electronic data storage
- Backup data is encrypted and safe, only the individual creating the password can access the data



**CoreControl<sup>SM</sup> Customer Portal and 24/7 Support**

- Traffic reports and monitoring
- Support requests and ticketing
- Billing Information
- 24/7/365 on-site NOC
- Remote hands
- Direct access to experienced, on-call engineers