

Dedicated Metro Internet Access

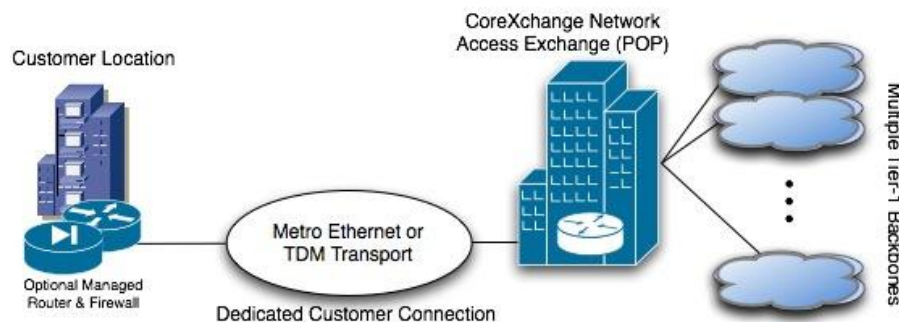
Does your business depend on Internet connectivity for day-to-day operations? Businesses have traditionally used the Internet for basic e-mail and web access, but more enterprises are relying on the Internet for their business-critical applications.

Cable and DSL are inexpensive connectivity solutions for individuals or very small offices, but they don't offer the flexibility or network performance to fully meet the needs of most businesses. Most plans of this type offer only limited up-stream bandwidth, and typically block certain business applications such as VPN, VoIP, and peer-to-peer. These services are also specifically designed for consumer use and lack service level agreements and support capabilities that businesses require.

CoreXchange Dedicated Metro Internet Access gives your enterprise a high-performance and secure connection to the Internet from your facility to our core network. You can inexpensively access one of the world's most reliable networks and directly connect to multiple Tier-1 backbones, including AT&T, Level(3), and AboveNet. CoreXchange does not filter applications, giving your business full use of your connection for both upstream and downstream traffic. We have numerous connection options ranging from 1 Mbps up to 10 Gbps. The CoreXchange network runs on a carrier-class infrastructure featuring the latest generation Juniper routers and switches. Our pricing and service configurations are very flexible, allowing you to tailor your bandwidth services to fit your business requirements.

Dedicated Metro Internet Access Snapshot

- Dedicated local loop connection to high-performance meshed network
- One-hop access to multiple Tier-1 backbones
- Latest carrier-class network infrastructure for optimal performance
- Metro Ethernet and TDM (DS3/OCn) connection options from 1 Mbps to 10 Gbps
- Provisioning, installation, and support fully managed by CoreXchange
- Business class bandwidth supporting VoIP, VPN, and other mission-critical applications
- Unlimited data transfers
- Static IP addresses
- Configurable service commitment, burst level, cap, and contract term using our patent pending ConfiguratorSM online pricing tool
- 24x7x365 expert engineering support
- Industry-leading service level agreements
- Available managed router service and managed firewall service add-ons

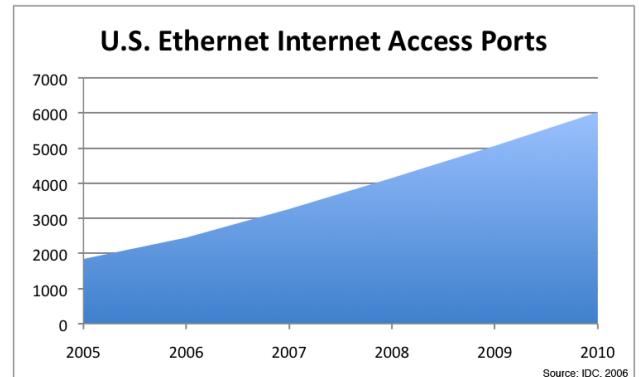


Metro Ethernet Connection (10 Mbps/100 Mbps/1 Gbps/10 Gbps)

More businesses are using Ethernet as their primary local loop transport to connect their locations to the Internet within a metropolitan area. If you're looking to connect a new office location or upgrade an existing TDM location, Metro Ethernet is your ideal solution.

Metro Ethernet advantages include:

- Accessible pricing
- Quick provisioning
- Easy connection to your office LAN and facilities



TDM Connection (T1, DS3, OC3, OC12, OC48)

TDM (Time-Division Multiplexing) connections offer a direct, dedicated point-to-point connection between your location and CoreXchange's Network Access Exchange point of presence. CoreXchange provisions TDM connections over the networking industry's most robust carrier facilities. Services include built-in redundancy protection, and customers may add on service options for diverse paths. Advantages of TDM services include:

- Broad coverage and availability
- Excellent "Mean Time Between Failure" and "Mean Time To Repair" rates
- Peace of mind that your business has the most reliable, best supported Internet connection option

Whether you select the Metro Ethernet or the TDM option for your Dedicated Metro Internet Access connection, CoreXchange will manage the entire service delivery process, from quote and provisioning to turn-up and support.

Contact a CoreXchange sales representative today for more information and a service quote.