

CoreXchange – The premier provider of Internet bandwidth, colocation and disaster recovery services.

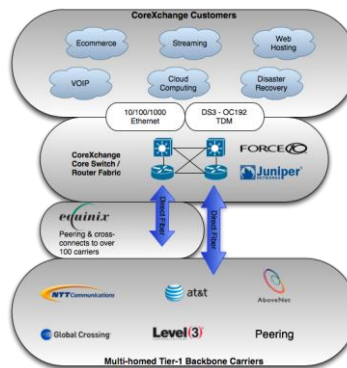
Founded in 2006 by top industry professionals from the networking, hosting and wireless industries, our management team and staff are experts in IT services, network technology, colocation, business continuity, and client support.

Innovative, cost effective, industry-leading solutions bring simplicity to advanced networking requirements.

Delivering the industry’s first network access exchange, a comprehensive suite of Internet bandwidth options, colocation solutions, managed network and availability services to business enterprises and service providers.

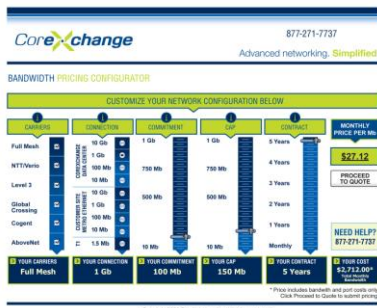
High availability and performance with multiple Tier-1 backbone carriers through one managed connection

- Superior performance for high network demand applications
- Redundant and fault-tolerant infrastructure
- Latest generation core routing and switching equipment
- Expert configuration and traffic routing



WHY COREXCHANGE

- Experienced engineering and service-oriented leadership
- Carrier-class colocation facility in the Dallas Infomart
- Multi-homed, Tier-1 backbone carriers
- State-of-the-art network equipment
- ConfiguratorSM tool for instant, online bandwidth pricing
- Metro Ethernet Internet connectivity
- Business Continuity Center
- Disaster Recovery
- Premier managed-backup solutions
- CoreControlSM portal for easy support & account management

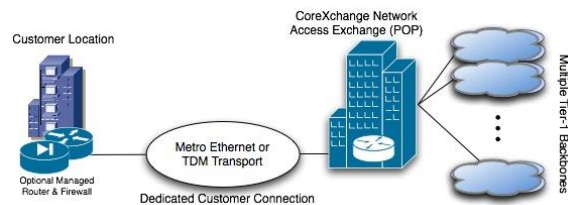


Instant online pricing and configuration with CoreXchange Configurator

- Industry’s first tool for immediate bandwidth pricing and custom configurations
- Multi-homed mesh of Tier-1 Internet backbones through one single, highly managed connection
- Complete control of performance and cost
- Reduces costs and eliminates lengthy negotiations with multiple carriers
- Custom configurations live and available today

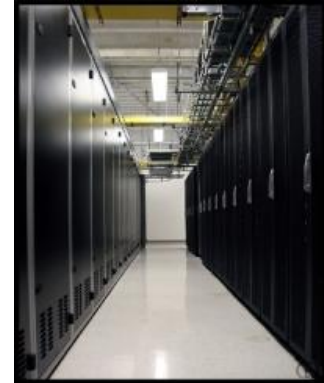
Metro Ethernet Connections to your office LAN and facilities with accessible pricing and quick provisioning

- Dedicated local loop to high-performance meshed network
- One-hop access to multiple Tier-1 backbones
- Metro Ethernet and TDM (DS3/OCn) connection options from 1 Mbps to 10 Gbps and above
- Business class bandwidth supports VoIP, VPN, and other mission-critical applications



CoreXchange Data Center located in the globally recognized Dallas Infomart

- Over 16 fiber providers with peering and cross connects to over 100 carriers, including direct connections to Equinix
- Unrivalled power redundancy that includes independent TXU substation feeders and six in-building main switchgear rooms
- 24/7/365 physical access and on-site NOC
- Free remote hands
- Free bandwidth reporting
- 100% power and network SLA available
- Redundant power via UPS and diesel generator backup
- Fire detection and suppression
- 10 Mbps to 10 Gig E fiber handoffs
- Expert Network / Security consulting and management



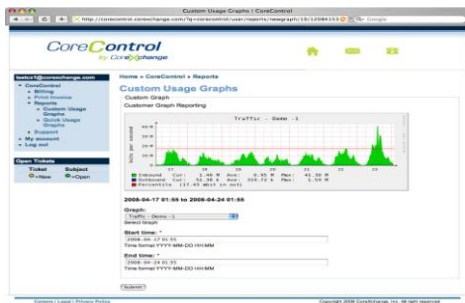
CoreAvailabilitySM, Affordable Business Continuity and Disaster Recovery Solutions



- Experienced engineers plan logistics and provide support for immediate recovery
- Unique combination of Class A office space directly adjacent to our high availability data center
- One-hop access to multiple Tier-1 network backbones
- Cubicles, conference rooms, copier, printers and kitchen
- Optional a la carte services including phone, desktop PCs, and office network
- On-site cafeteria and convenience store
- Dallas metro location with over 70,000 hotel rooms outside hurricane and flood zones

Instant, offsite backup via CoreXchange's Network Access Exchange

- CoreXchange provides backup and data recovery services in partnership with industry leader i365TM Inc., a Seagate Company[®]
- Backups work seamlessly within an existing infrastructure
- Fully automated and customizable, no manual intervention
- Encrypted data is available 24/7 via user-initiated recovery
- Recovery is rapid, accurate, and immediate
- No need for expensive tape media, hardware or software
- Backup agents install easily and data is sent over existing private networks or the Internet
- Organizations can easily comply with regulations governing electronic data storage
- Backup data is encrypted and safe, only the individual creating the password can access the data



CoreControlSM Customer Portal and 24/7 Support

- Traffic reports and monitoring
- Support requests and ticketing
- Billing Information
- 24/7/365 on-site NOC
- Remote hands
- Direct access to experienced, on-call engineers